

Scimedico Temporary Patient Care™  
Solutions Incidence Response - Incidence  
Response



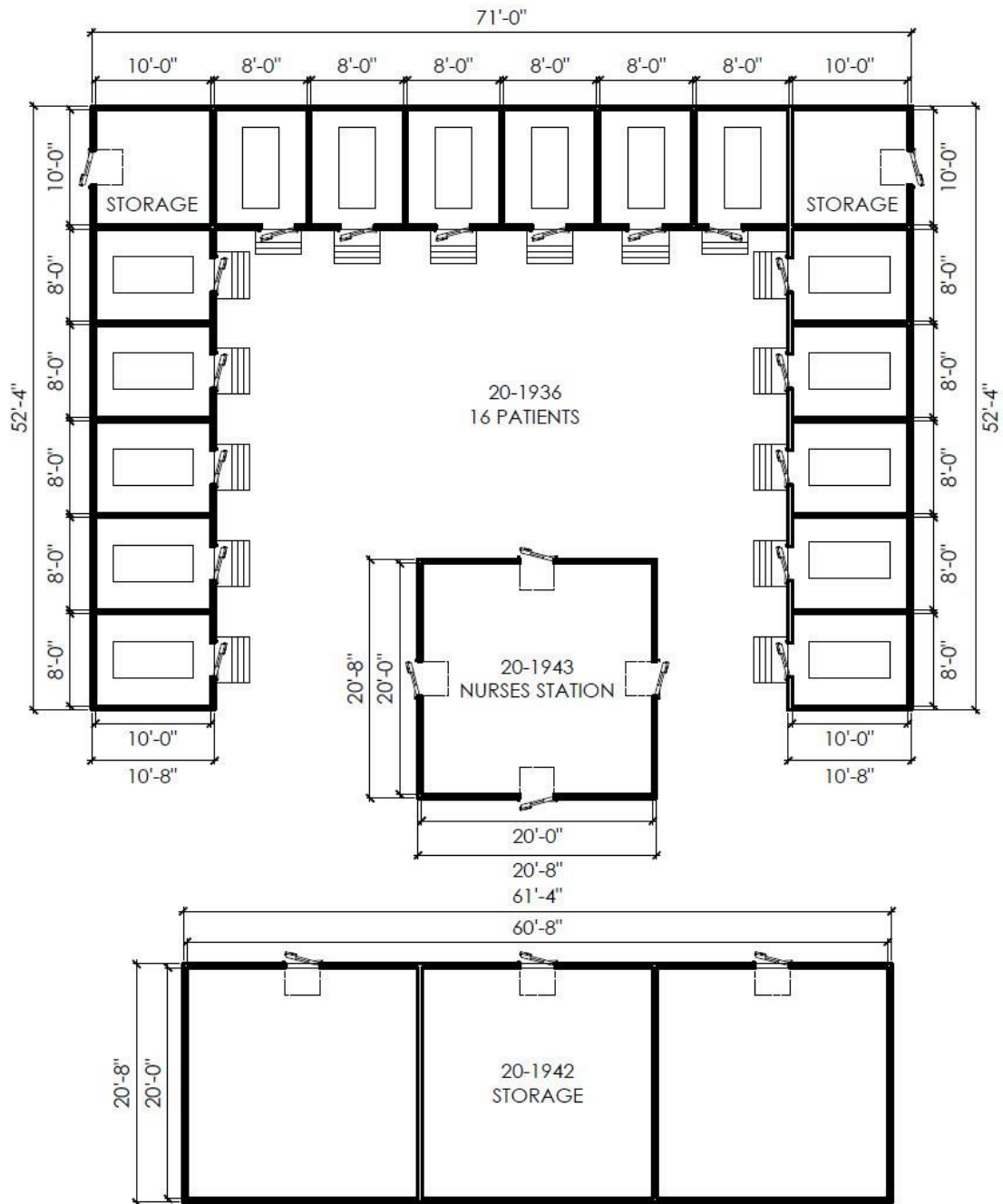
### **About Scimedico Temporary Patient Care**

Scimedico is standing by to support both clinical facilities and governments with the appropriate solution to address COVID-19 requirements. Scimedico provides fully enabled Temporary Patient Care solutions, turn-key installation, and full site support.

Scimedico Temporary Patient Care options:

- *Scimedico Temporary Patient Care - Option A - 16 room option*
- *Scimedico Temporary Patient Care - Option B - 24 room option*
- *Scimedico Temporary Patient Care - Option C - 32 room option*

## Temporary Patient Care Deployment Options



## Incidence Response Options

Scimedico provides emergency **C19 INCIDENCE RESPONSE** solutions for mass casualty and natural disaster requirements. Scimedico solutions are ready to deploy as fully defined emergency response solutions to support county, state, federal, and healthcare system patient capacity emergency response needs.

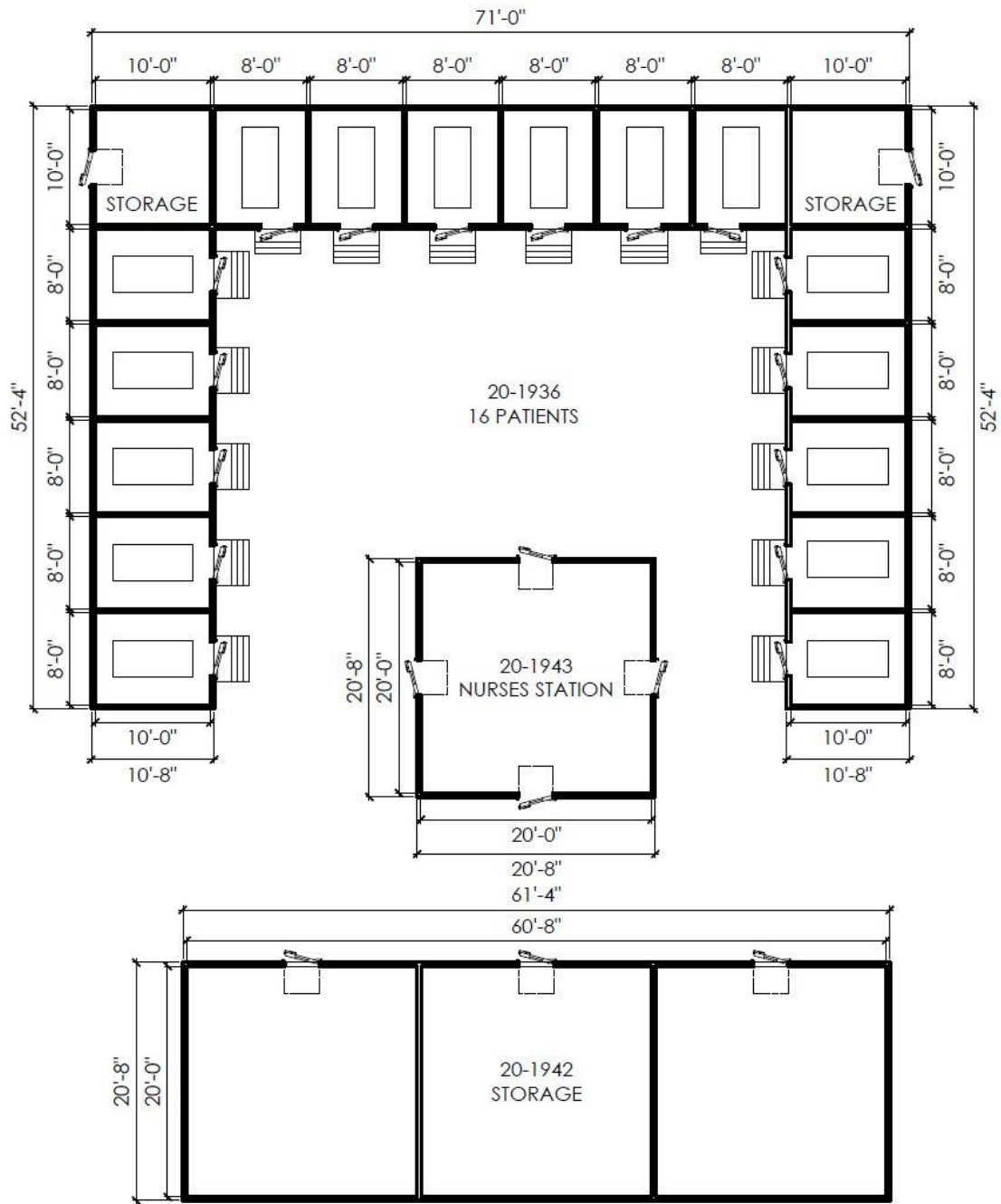
All options include:

- Functional patient rooms
- Full installation
- Requires Cost Plus contracting

Scimedico Temporary Care Solutions are also available to support clinical facilities:

**Scimedico C19 CLINICAL RESPONSE** provides scheduled or emergency deployment at a hospital facility location to provide additional patient rooms for transitional or recovery care capacity. Scimedico Temporary Patient Care offers clinical facilities scalable physical structures proximate to the hospital facility.

# Temporary Patient Care Features



Scimedico Temporary Patient Care Options

Scimedico is standing by to support both clinical facilities and governments with the appropriate solution to address COVID-19 requirements. Scimedico provides fully enabled Temporary Patient Care solutions, turn-key installation, and full site support.

All installations include:

- Provides on site transitional care allowing hospitals to optimize staff time while freeing up resources within the facility
- Rooms provide patient bed, alarm, hand washing sink, lighting attached portable toilet, climate control, and 4 GFCI receptacles
- Includes nursing station and storage for both clinical and maintenance supplies
- Can be installed in a parking garage, a parking lot, or any open space
- Installation is turn-key including site review, utility runs, unit installation, commissioning, and training

## About Installation & Ongoing Support



1-844-445-2263



### ***GRS Reconstruction Services***

GRS delivers a single-source approach to getting your buildings reconstructed after disaster strikes. This collaborative service model maximizes owner control over restoration scope, costs and schedule while seeking to minimize conflicts with property insurance settlements. The GRS Model is uniquely focused to provide the most timely, cost effective approach to our clients along with the information necessary to allow them to make the most informed decisions in dealing with the loss.

Scimedico has partnered with GRS Reconstruction Services to manage all emergency response cost plus implementation

- Installation is turn-key including all required contracting, engineering, and related deployment support
- Solution includes full electrical, HVAC, and plumbing connections. Sink water is discharged to temporary holding tank
- Project team includes Program Manager, related professionals, site superintendent, and all required sub contractors
- Implementation is based on site survey and emergency response approach based on cost plus deployment
- Solution provided on a cost plus basis for all incidence response solution

## Deployment Approach - Incidence Response

### ***Deployment Approach***



- Provided on standard or custom basis based on capacity requirements
- Cost Plus deployment approach provides cost estimate with fixed cost items as well as a cost plus contract addressing wrapped services

- Costs vary based on overall requirements, utility implementation specifications, and field conditions

For a quote or to contact your account representative, please [CLICK HERE](#)

